



# Visual Arts Virtual Learning

## Painting I

# “Looking Closer”

## Artwork Critique

Grades 9-12

May 12th, 2020



## **Objective/Learning Target:**

**The student will increase his/her visual literacy by analyzing specific aspects of a provided painting.**

### **Bell Ringer**

“Instinct must be thwarted just as one prunes the branches of a tree so that it will grow better” --Henri Matisse

What does this quote mean to you? What style do you predominantly work in? Why do you find yourself commonly moving toward this style? Which style (and technique) would you use if you were to work in an almost opposite way of your usual preferences? What would be the most difficult aspect of working in a radically different style?



## Lesson/Activity

Because there cannot be an expectation that all students create an actual painted piece of artwork, this lesson gives students the opportunity to look at and analyze pieces that could have been presented in classes at school.

IF you have access to painting supplies at home, hopefully the examples shown in the lessons will be a source of inspiration for your own work.

## Student Practice

Look at the provided example(s) & answer the following questions.

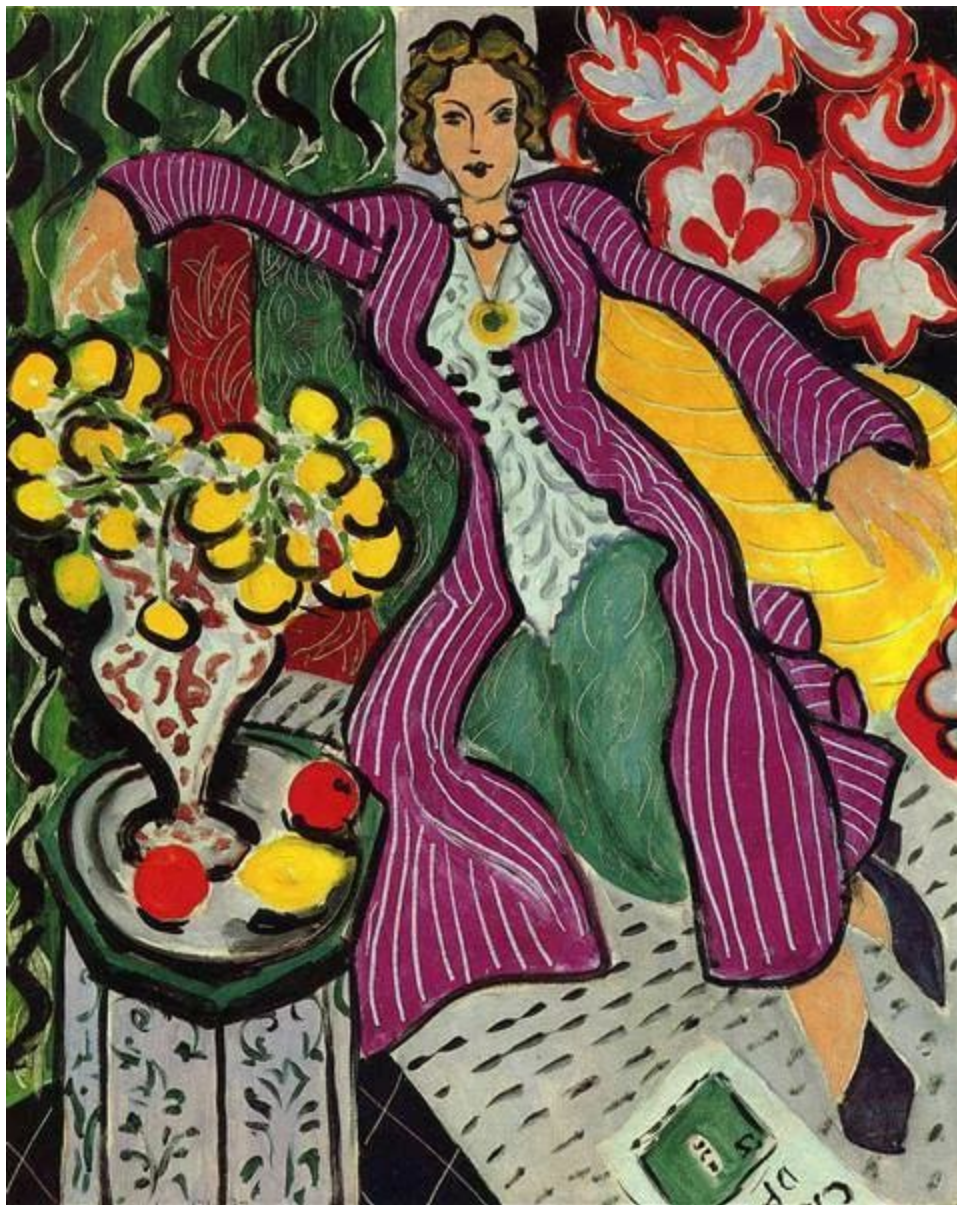
## Additional Resources

painting example(s):

Painting Title: "Femme Au Manteau Violet"

Artist: Henri Matisse

Style: Fauvism





## Reflection/Evaluation/Check for Understanding:

### Composition

1. What objects, imagery, and/or Elements of Art are you seeing in the work?
2. Is there a main subject or focal point?
3. What are you seeing in the background or negative space areas?
4. What balance are you seeing in the work?
5. Are you seeing any of the other Principles of Design? Which ones?
6. Do you see an appearance of space or distance? If so, what has the painter done to create this look?
7. What else do you notice about how the painting has been composed? Has the painter used the Rule of Thirds, using odd numbers, etc.?

### Color Usage

1. What colors are you seeing?
2. Do these colors help create a specific color scheme? If so, which one?
3. How has the painter used color intensity? In other words, are the colors saturated, dull, or a combination of both?
4. How has the painter used color value? Are colors predominantly light, dark, or a combination of both?



## Style/Technique

1. How would you describe the appearance of the objects/imagery? Realistic? Cartoon-ish? A combination? Abstract? Objective or nonobjective?
2. What are you specifically seeing that led you to your answer for question number 1?
3. How would you describe how the paint has been applied (the technique)?
4. What does the technique add to the painting?

## Content

1. What do you think is the intended content (message) of the painting?
2. How does the focal point (main subject) relate to the content?
3. How does the arrangement (including size) of objects/imagery relate to the content?
4. What else is happening in the composition that you think adds to the content?
5. Is the color scheme important to conveying the content? Why or why not?
6. How does the saturation (or de-saturation) of the colors relate to the content?
7. How does the style and technique of the painting help add to the content?

## Reflection

1. How would you describe the overall mood, vibe, and energy of the painting?
2. In what ways do you feel the painting is successful?
3. Roughly how long do you think the work took to complete? Why?
4. Overall, do you like or dislike the painting? Please explain why.
5. What, if anything, could you incorporate from this painting into your own work?

Additional Examples of Matisse's work:



